

ANGELO'S

MCHENRY FRESH MARKET
ANGELO'SMCHENRY.COM

4400 ELM - RTE 120
MCHENRY, IL
815.385.1430
F: 815.385.1479
STORE HOURS:
MON-SUN: 8AM-7PM
DELI HOURS:
MON-SUN: 8AM-6:30PM

TRY ANGELO'S CURBSIDE PICKUP **FREE**

Phone in your order from 10:00AM to 2:00PM for same day or next day pickup. 815-385-1430

5% SENIOR CITIZEN DISCOUNTS
EVERY TUESDAY & THURSDAY ON ALL PURCHASES.
CASH TRANSACTIONS ONLY.
 We have the right to correct printing errors and limit quantities.

SALE DATES: JAN. 22TH - JAN. 28ST

PRODUCE



Roma Tomatoes
5 Lbs Limit
.99 LB



Jalapeno Peppers
.89 LB



Green Bell Peppers
.99 LB



Navel Oranges
3 Lb bag
2.99



Mangos
Each
.69



Yukon Gold Potatoes
'B' Size, 3 LB Bag
1.69

- Grape Tomatoes Pint **2/3.00**
- Farm Fresh Cucumbers **.69 EA**
- Fresh Cilantro 2 Bunches **1.00**
- Serrano Peppers **.89 LB**
- Tomatillos **.89 LB**
- Pascal Celery STALK **1.29**
- Farm Fresh Broccoli Crowns **1.29 LB**
- Fresh Brussel Sprouts **1.49 LB**
- Sno White Cauliflower **1.29 LB**
- Green Cabbage **.69 LB**
- Head Lettuce **1.29 HEAD**
- Fresh Blueberries
or Raspberries PINT/6 OZ PKG **2/5.00**

MEATS



Fresh Chicken Drumsticks
.69 LB



Fresh Boneless Skinless Chicken Breast
Family pack
1.99 LB



Boneless American Cut Pork Chops
Family pack
2.49 LB



Boneless Pork Roast
2.29 LB



U.S.D.A. Choice Boneless Top Round Rump Roast
5.99 LB



U.S.D.A. Choice Boneless Beef Stew
5.99 LB

MEATS



U.S.D.A. Choice Boneless Strip Steak
8.99 LB



U.S.D.A. Gov. Inspected Porterhouse Steak
6.99 LB



U.S.D.A. Gov. Inspected T-Bone Steak
6.49 LB



Fresh Ground Chuck
3 Lbs Or More
3.49 LB



Angelo's Fresh Home Made, Italian Sausage, Polish Sausage, Brats, And Chorizo
2.99 LB

- Boneless Pork Country Ribs **2.29 LB**
- Thin Cut Brown & Serves **2.69 LB**
- Ready To Cook Breaded Pork Cuttles **2.49 LB**
- U.S.D.A. Choice Sirloin Tip Steak Family Pack **6.99 LB**
- U.S.D.A. Choice All Lean Cube Steak **5.99 LB**
- U.S.D.A. Choice Thin Cut Sandwich Steaks **6.99 LB**
- Fresh Lean Ground Round 2Lbs Or More **4.99 LB**

DELI



Freshly Sliced Krakus Ham
5.99 LB



Domestic Swiss Cheese
4.99 LB



Primo Genoa Salami
3.49 LB



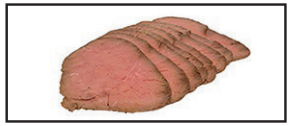
Kretschmar Bacon Encrusted Off The Bone Turkey Breast
5.99 LB



Angelo's Homemade Pan Roasted Turkey Breast
4.99 LB



Provolone Cheese
4.99 LB



Angelo's Homemade Italian Roast Beef
Free Juice
10.99 LB

DELI

- Kretschmar Low Sodium Turkey Breast **4.29 LB**
- Eckrich Bologna **2.99 LB**
- Campfire Chicken Breast **4.99 LB**
- Homemade Greek Feta Cheese Salad **4.99 LB**
- Homemade Caprese Salad **6.99 LB**
- Homemade Pasta Salad **3.49 LB**
- Homemade Tuna Salad **3.99 LB**

KITCHEN

Hot Case



Angelos Famous Chicken
8 PCS 2 of each. 2 breasts, 2 legs, 2 thighs & 2 wings Fried Or Greek Style Roasted
6.99



Extra Large Chicken Tenders
Free Ranch Dressing
4/5.00



Plain Party Chicken Wings
12/3.99



Come In And Try Our Italian Beef Sandwich, Best In Town!
3.49 LB

- Mild Italian Sausage With Peppers **3.49 LB**

Heat & Serve

- Chicken Marsala **7.99 LB**
- Meat Lasagna **5.99 LB**
- Eggplant Parmigiana **5.99 LB**
- Breaded Pork Cutlets **4.99 LB**
- Stuffed Artichokes **5.99 EA**

LIQUOR

- Miller High Life 30 Pack **18.99**
- Miller Or Coors 12 Pack **11.99**
- Old Style 24 Pack **15.99**
- Heineken 12 Pack **17.99**
- Vizzy 12 Pack **17.99**

ANGELO'S

MCHENRY FRESH MARKET

ANGELOSMCHENRY.COM

4400 ELM - RTE 120
MCHENRY, IL
 815.385.1430
F: 815.385.1479
STORE HOURS:
MON-SUN: 8AM-7PM
DELI HOURS:
MON-SUN 8AM-6:30PM

TRY ANGELO'S CURBSIDE PICKUP **FREE**

Phone in your order from 10:00AM to 2:00PM
 for same day or next day pickup. 815-385-1430

5% SENIOR CITIZEN DISCOUNTS

EVERY TUESDAY & THURSDAY ON ALL PURCHASES.
CASH TRANSACTIONS ONLY.

We have the right to correct printing errors and limit quantities.

SALE DATES: JANUARY 22ND - JANUARY 28TH

GROCERY



Frito
Lays XL Lays
 5-8 OZ
2/5.00



Bush's
Baked Beans
 15-16 OZ
 EXCLUDES BAKED
5/5.00



Tropicana
**Refreshers or
 Lemonade**
 46 OZ
2/5.00



Best Choice
Grated Cheese
 8 OZ
2.99

Frito Lay Cheetos 6.5-8.5 OZ	3.99
Pure Life Water 24 PK	3.99
Hawaiian Punch 128 OZ	2.99
Kraft Easy Mac Or Velveets Shells & Chees Cups 2-2.39 OZ	5/5.00
Kraft Mayonnaise or Miracle Whip 12-15 OZ	3.99
Juicy Juice 64 OZ	2/5.00
Starkist Chunk Light Tuna Pouches or Bowls 2.6-.5 OZ	5/1.00
Best Choice Salad Dressings 16 OZ	2.19
Maxwell House Wake Up Roast 28.4 OZ	8.49
Best Choice Granola 11 OZ	3.29
Nissin Ramen Bowls or Chow Mein 2.89-4 OZ	5/5.00
Nissin Cup Noodles 2.25 OZ	6/3.00
Ortega Taco Shells 8-10 CT	1.99
Ortega Taco Sauce 8 OZ	2.49
Tabasco Hot Sauce 1 OZ	2.99
Ortega Taco Seasonings 1 OZ79
Post Cereal 13.5-16 OZ	3.99
Quaker Instant Oatmeal 6-10 CT	2.49
Voortman Cookies 5-11.3 OZ	2.99
Lipton Tea Bags 100 CT	4.99
Act II Popcorns 3 CT	1.99
Quaker Rice Cakes 4.5-6.56 OZ	3.49
Mrs.dash Seasonings 2.5-2.6 OZ	2.99
Crisco Vegetable Oil 128 OZ	12.99
Duncan Hines Premium Walnut Brownie 17.6 OZ	2/6.00
Best Choice Saltine Crackers 9-16OZ	3/5.00
Mrs Butterworths Syrup 24 OZ	3.99
Bisquick Pancake Mix 40 OZ	4.49
Pillsbury Grands! Crecents, Cinnamom Rolls or Flaky Layer Biscuits 4-12 OZ MINI PKS	2/3.00
Imperial Spread 15 OZ	1.99
Kraft Singles 10.7-12 OZ	2/7.00

Philadelphia Soft Or Whipped Cream Cheese 7.5-16 OZ	3.99
Velveeta Slices 12 OZ	2.99
Blue Bonnet Spread 45 OZ	2.99
Jello Gelatin Or Pudding 4 CT	2.99
Eckrich Smoked Sausage Links & Smokies 14-18 OZ	2.99
Spam Luncheon Meat 12 OZ	3.99
Best Choice Croutons 5 OZ	1.39
Hunt's Tomatoes, Sauce or Ketchup 14.5 - 20 OZ	2/3.00
Subway or Arby's Sauce 16 OZ	3.49
Mccafe Bag Coffee 12 OZ	8.49
Welch's Grape Jelly 20 OZ	2.99
Mott's Apple Juice 128 OZ	5.99
Clamato Cocktail Juice 32 OZ	2.99
Dunkin Donuts Creamer 32 OZ	4.49
Silk Almond Milk 59-64 OZ	2/6.00
Banquet Classic Entrees 7.4-11.88 OZ	3/5.00
Green Giant Vegetables 7-8 OZ	5/5.00
Stouffer's Entrees 8-12.75 OZ	2.99
Totino's Pizza Rolls 100 CT	8.99
Bagel Bites Pizza 7 OZ	2/5.00
Boston Market Entrees 13-15 OZ	2.99
Hot Pockets Frozen Sandwiches 8.5-9 OZ	4/10.00
La Choy Soy Sauce 10 OZ	1.99
La Choy Frozen Entrees 18 OZ	3.99
La Choy Yum Yum Sauce 16 OZ	3.49
La Choy Soup 14.5 OZ	2/5.00
P.F. Chang's Marinades 13.5-14.2 OZ	3.49
P.F. Chang's Cooking or Hot Sauce 8-10 OZ	2.99

Kellogs Cereal 12-17.3 OZ SELECT VARIETY	2/7.00
General Mill Cereal 12-16.8 OZ SELECT VARIETY	2/7.00
Nabisco Chips Ahoy, Ritz, Belvita or Snack Crackers 6.5-13.7 OZ	2/7.00
Ragu Pasta Sauce or Bertolli Pasta Sauce 16-24 OZ	2/4.00
Sunny Delight Punch 64 OZ	2/3.00
Hamburger Helper 4.7-8.7 OZ	2/3.00
Simply Orange, Cranberry, Apple or Grapefruit Juice 52 OZ	3.99